

Huerhuero Vineyard

8ft Rows Variety Map

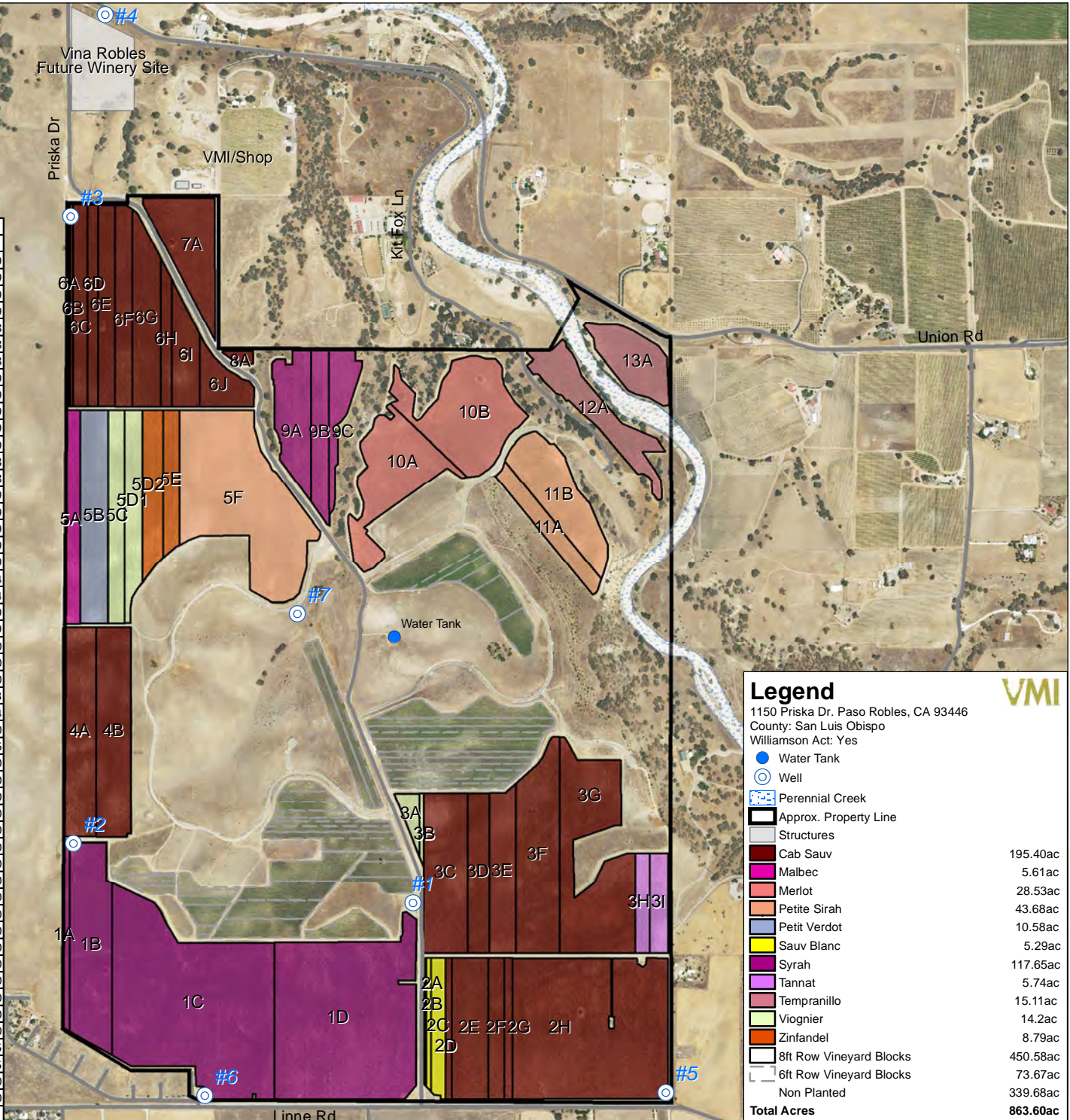


Mike Bobbitt & Associates
(805)466-2920
www.mikebobbitt.com
09 Aug 2016

0 1250 500 750 1,000
Feet



8ft Rows	Blocks	Variety	Clone	Rootstock	Spacing	Vines	Acres	Planted
	1A	Syrah	Shiraz	3309C	8x6	908	2.08	1999
	1B	Syrah	Shiraz	5BB	8x6	908	14.85	1999
	1C	Syrah	Shiraz	5C	8x6	908	44.47	1999
	1D	Syrah	Shiraz	110R	8x6	908	39.25	1999
	2A	Sauv Blanc	Musque	5BB	8x6	908	0.64	2008
	2B	Sauv Blanc	Musque	5C	8x6	908	1.53	2008
	2C	Sauv Blanc	Musque	110R	8x6	908	3.12	2008
	2D	Cab Sauv	337	1103P	8x6	908	1.59	1999
	2E	Cab Sauv	15	1103P	8x6	908	9.3	1999
	2F	Cab Sauv	07	1103P	8x6	908	3.63	1999
	2G	Cab Sauv	07	5BB	8x6	908	2.27	1999
	2H	Cab Sauv	07	5C	8x6	908	38.48	1999
	3A	Viognier	01	110R	8x6	908	0.57	2008
	3B	Viognier	01	SO4	8x6	908	0.21	2008
	3C	Cab Sauv	337	SO4	8x6	908	12.43	1999
	3D	Cab Sauv	337	1103P	8x6	908	6.47	1999
	3E	Cab Sauv	337	SO4	8x6	908	7.07	1999
	3F	Cab Sauv	07	5C	8x6	908	15.72	1999
	3G	Cab Sauv	07	5BB	8x6	908	19.37	1999
	3H	Tannat	01	1103P	8x6	908	2.55	2004
	3I	Tannat	717	1103P	8x6	908	3.19	2004
	4A	Cab Sauv	02	SO4	8x6	908	12.54	2009
	4B	Cab Sauv	03	1103P	8x6	908	12.87	2009
	5A	Malbec			8x6	908	5.61	2000
	5B	Petit Verdot			8x6	908	10.58	2000
	5C	Viognier	01	SO4	8x6	908	9.14	2000
	5D1	Viognier	01	5C	8x6	908	4.28	2013
	5D2	Zinfandel	11	5C	8x6	908	4.27	2014
	5E	Zinfandel	11	5C	8x6	908	4.52	2000
	5F	Petite Sirah	03	5C	8x6	908	28.57	2016
	6A	Cab Sauv	5169	5BB	8x6	908	0.11	2000
	6B	Cab Sauv	169	110R	8x6	908	1.57	2000
	6C	Cab Sauv	06	3309C	8x6	908	4.92	2000
	6D	Cab Sauv	06	101-14	8x6	908	4.25	2000
	6E	Cab Sauv	337	1103P	8x6	908	5.45	2000
	6F	Cab Sauv	15	SO4	8x6	908	6.51	2000
	6G	Cab Sauv	04	101-14	8x6	908	8.85	2000
	6H	Cab Sauv	06	3309C	8x6	908	2.71	2000
	6I	Cab Sauv	SEE	101-14	8x6	908	5.01	2000
	6J	Cab Sauv	337	SO4	8x6	908	4.15	2000
	7A	Cab Sauv	04	1103P	8x6	908	9.55	2000
	8A	Cab Sauv	04	1103P	8x6	908	0.58	2000
	9A	Syrah	Noir	110R	8x6	908	7.93	2000
	9B	Syrah	Noir	5BB	8x6	908	5.33	2000
	9C	Syrah	Noir	1103P	8x6	908	3.74	2000
	10A	Merlot	03	5BB	8x6	908	12.91	2000
	10B	Merlot	181	1103P	8x6	908	15.62	2000
	11A	Petite Sirah	03	1103P	8x6	908	5.28	2005
	11B	Petite Sirah	03	SO4	8x6	908	9.83	2005
	12A	Tempranillo	02	3309C	8x6	908	8.33	2000
	13A	Tempranillo	02	3309C	8x6	908	6.78	2000
Total							450.58	



Legend

1150 Priska Dr. Paso Robles, CA 93446
County: San Luis Obispo
Williamson Act: Yes

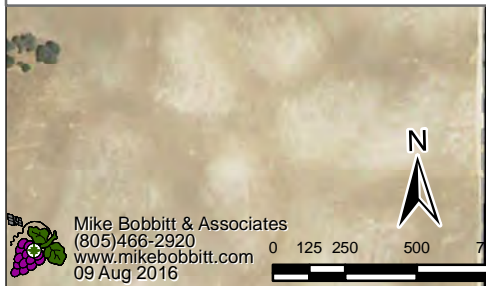
	Water Tank	
	Well	
	Perennial Creek	
	Approx. Property Line	
	Structures	
	Cab Sauv	195.40ac
	Malbec	5.61ac
	Merlot	28.53ac
	Petite Sirah	43.68ac
	Petit Verdot	10.58ac
	Sauv Blanc	5.29ac
	Syrah	117.65ac
	Tannat	5.74ac
	Tempranillo	15.11ac
	Viognier	14.2ac
	Zinfandel	8.79ac
	8ft Row Vineyard Blocks	450.58ac
	6ft Row Vineyard Blocks	73.67ac
	Non Planted	339.68ac
Total Acres		863.60ac



Disclaimer: The information herein was compiled from multiple publicly available sources, is considered reliable and the most current available; it is, however, provided without warranty, either express or implied. No liability is assumed either directly or indirectly. Contact a licensed Land Surveyor for any questions regarding legal property boundaries

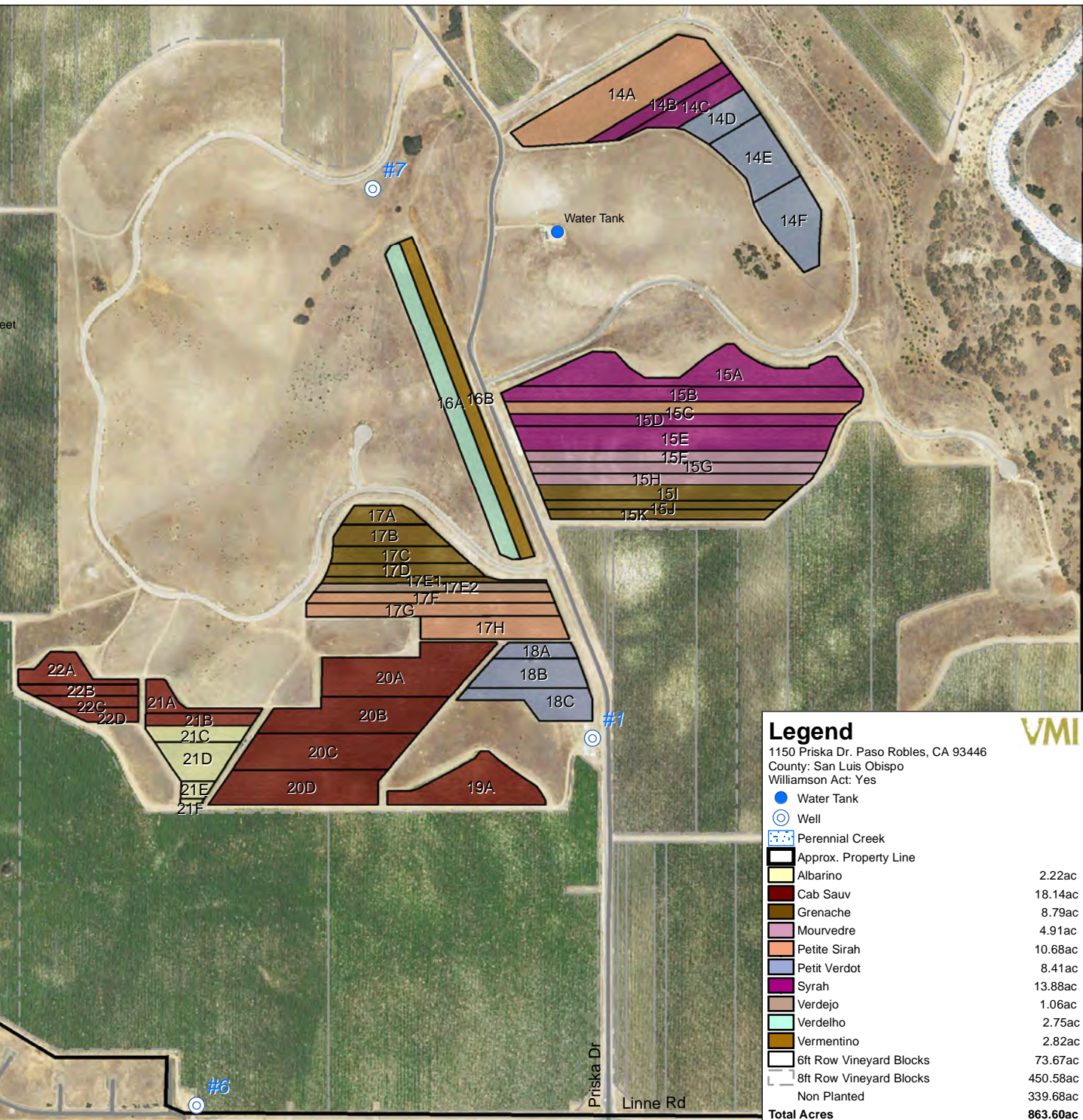
Huerhuero Vineyard

6ft Rows
Variety Map



Mike Bobbitt & Associates
(805)466-2920
www.mikebobbitt.com
09 Aug 2016

Blocks	Variety	Clone	Rootstock	Spacing	Vines	Acres	Planted
14A	Petite Sirah	03	1103P	6x4	1,815	4.4	2004
14B	Syrah	174	1103P	6x4	1,815	0.95	2005
14C	Syrah	174	1103P	6x4	1,815	1	2005
14D	Petit Verdot	400	Fercal	6x4	1,815	1.01	2004
14E	Petit Verdot	400	Fercal	6x4	1,815	1.95	2004
14F	Petit Verdot	400	1103P	6x4	1,815	1.99	2004
15A	Syrah	John Alban 1	1103P	6x4	1,815	3.76	2005
15B	Syrah	Estrella	1103P	6x4	1,815	2.5	2005
15C	Petite Sirah	03	1103P	6x4	1,815	1.99	2005
15D	Syrah	470	1103P	6x4	1,815	2.09	2005
15E	Syrah	877	1103P	6x4	1,815	3.58	2005
15F	Mourvedre	233	Fercal	6x4	1,815	1.7	2004
15G	Mourvedre	369	Fercal	6x4	1,815	1.64	2004
15H	Mourvedre	233	Fercal	6x4	1,815	1.57	2004
15I	Grenache	03	101-14	6x4	1,815	1.96	2005
15J	Grenache	362	Fercal	6x4	1,815	1.06	2005
15K	Grenache	136	Fercal	6x4	1,815	0.98	2005
15L	Verdelho	06	101-14	6x4	1,815	2.75	2007
16A	Vermentino	Tablas Creek	101-14	6x4	1,815	2.82	2007
17A	Grenache	362	5BB	6x4	1,815	0.72	2006
17B	Grenache	513	5BB	6x4	1,815	1.17	2006
17C	Grenache	Noir	1103P	6x4	1,815	1.08	2006
17D	Grenache	Noir	SO4	6x4	1,815	1.07	2006
17E1	Grenache	450	1103P	6x4	1,815	0.75	2006
17E2	Verdejo	1103P	6x4	1,815	1.06	2015	
17F	Petite Sirah	520	1103P	6x4	1,815	1.1	2009
17G	Petite Sirah	233	3309C	6x4	1,815	1.45	2009
17H	Petite Sirah	369	3309C	6x4	1,815	1.74	2009
18A	Petit Verdot	400	101-14	6x4	1,815	0.64	2002
18B	Petit Verdot	02	101-14	6x4	1,815	1.46	2002
18C	Petit Verdot	02	101-14	6x4	1,815	1.36	2002
19A	Cab Sauv	06	SO4	6x4	1,815	2.4	2002
20A	Cab Sauv	337	5C	6x4	1,815	3.38	2002
20B	Cab Sauv	337	1103P	6x4	1,815	2.83	2002
20C	Cab Sauv	337	101-14	6x4	1,815	2.75	2002
20D	Cab Sauv	06	3309C	6x4	1,815	2.76	2002
21A	Cab Sauv	337	101-14	6x4	1,815	0.7	2014
21B	Cab Sauv	337	101-14	6x4	1,815	0.7	2014
21C	Albarino	09	101-14	6x4	1,815	0.74	2009
21D	Albarino	04	5BB	6x4	1,815	1.13	2009
21E	Albarino	04	1103P	6x4	1,815	0.29	2012
21F	Albarino	09	1103P	6x4	1,815	0.06	2012
22A	Cab Sauv	337	101-14	6x4	1,815	1.14	2014
22B	Cab Sauv	337	SO4	6x4	1,815	0.57	2014
22C	Cab Sauv	337	101-14	6x4	1,815	0.51	2014
22D	Cab Sauv	337	SO4	6x4	1,815	0.4	2014
Total						73.66	



Legend
 1150 Priska Dr. Paso Robles, CA 93446
 County: San Luis Obispo
 Williamson Act: Yes

- Water Tank
- Well
- Perennial Creek
- Approx. Property Line
- Albarino
- Cab Sauv
- Grenache
- Mourvedre
- Petite Sirah
- Petit Verdot
- Syrah
- Verdejo
- Verdelho
- Vermentino
- 6ft Row Vineyard Blocks
- 8ft Row Vineyard Blocks
- Non Planted

2.22ac
18.14ac
8.79ac
4.91ac
10.68ac
8.41ac
13.88ac
1.06ac
2.75ac
2.82ac
73.67ac
450.58ac
339.68ac
Total Acres 863.60ac

Disclaimer: The information herein was compiled from multiple publicly available sources, is considered reliable and the most current available; it is, however, provided without warranty, either express or implied. No liability is assumed either directly or indirectly. Contact a licensed Land Surveyor for any questions regarding legal property boundaries