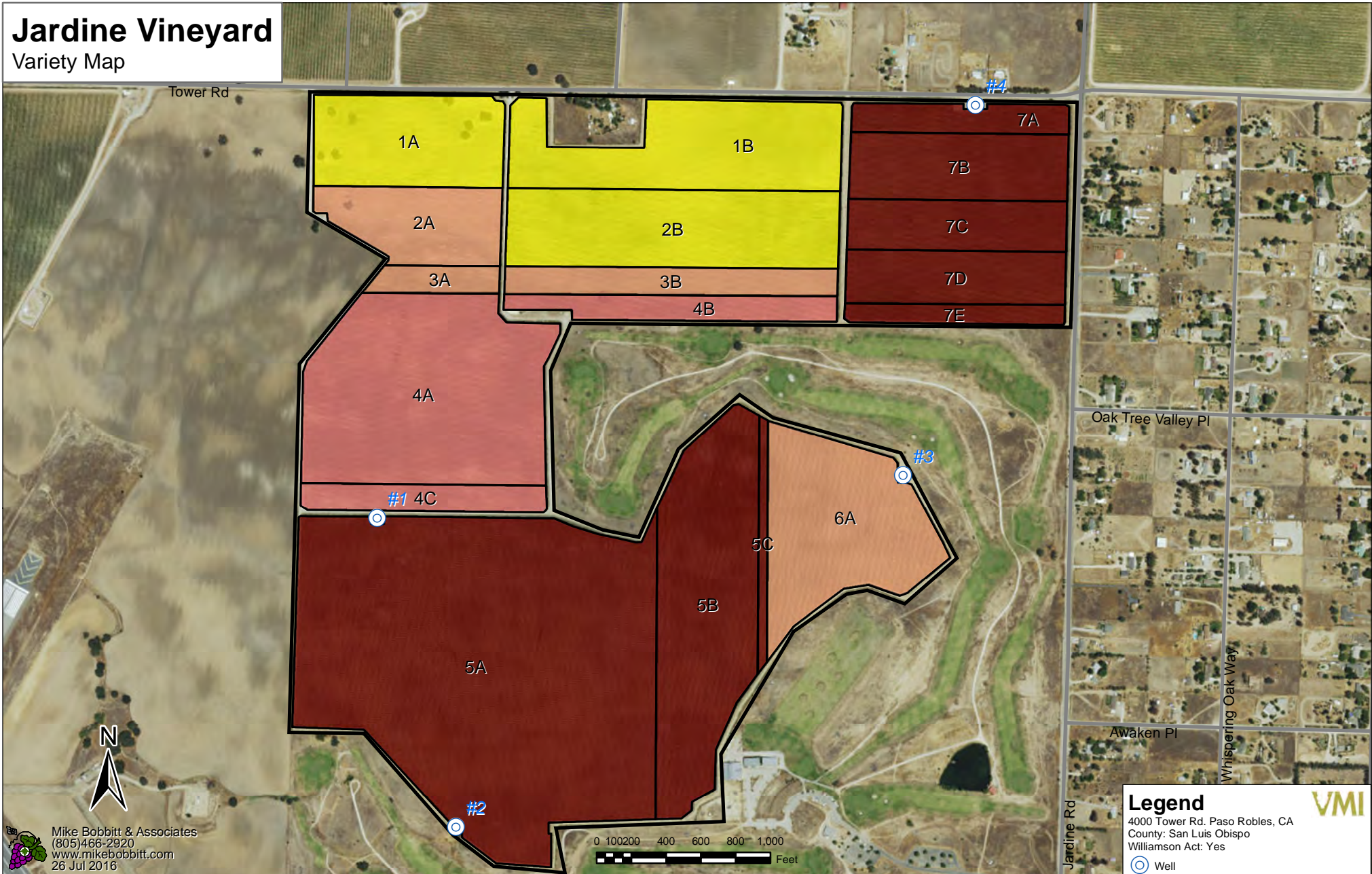


Jardine Vineyard

Variety Map



Mike Bobbitt & Associates
 (805)466-2920
 www.mikebobbitt.com
 26 Jul 2016

Block	Variety	Clone	Rootstock	Spacing	Vines	Acres	Planted	Block	Variety	Clone	Rootstock	Spacing	Vines	Acres	Planted	Block	Variety	Clone	Rootstock	Spacing	Vines	Acres	Planted		
1A	Sauv Blanc	03	110R	8x6	11,641	12.82	1997	4B	Merlot	03	5C	8x6	5,675	6.25	1997	7A	Cab Sauv	06	1103P	8x6	4,168	4.59	2000		
1B	Sauv Blanc	03	110R	8x6	16,943	18.66	1997	4C	Merlot	03	110R	8x6	6,574	7.24	1997	7B	Cab Sauv	337	5BB	8x6	10,197	11.23	2000		
2A	Petite Sirah	03	3309C	8x6	8,690	9.57	2014	5A	Cab Sauv	07	110R	8x6	70,107	77.21	1997	7C	Cab Sauv	04	110R	8x6	7,863	8.66	2000		
2B	Sauv Blanc	03	01	8x6	17,951	19.77	2016	5B	Cab Sauv	337	110R	8x6	22,845	25.16	1997	7D	Cab Sauv	04	101-14	8x6	8,072	8.89	2000		
3A	Petite Sirah	03	110R	8x6	2,533	2.79	2010	5C	Cab Sauv	15	110R	8x6	1,970	2.17	1997	7E	Cab Sauv	337	1103P	8x6	3,269	3.60	2000		
3B	Petite Sirah	03	110R	8x6	6,737	7.42	2010	5D*	Cab Sauv	07	110R	8x6	3,432	3.78	1997	Total Planted						92,543	279.92		
4A	Merlot	03	5C	8x6	28,048	30.89	1997	6A	Petite Sirah	Durif	110R	8x6	17,452	19.22	1997	* Block 5D is along the fenceline									

Legend
 4000 Tower Rd. Paso Robles, CA
 County: San Luis Obispo
 Williamson Act: Yes

○ Well

▭ Approx. Property Line

■ Cab Sauv 145.29ac

■ Merlot 44.38ac

■ Merlot 44.38ac

■ Sauvignon Blanc 51.25ac

▭ Vineyard Blocks 279.92ac

▭ Non-planted 15.08ac

Total Acres 295.00ac

VMI

Disclaimer: The information herein was compiled from multiple publically available sources, is considered reliable and the most current available; it is, however, provided without warranty, either express or implied. No liability is assumed either directly or indirectly. Contact a licensed Land Surveyor for any questions regarding legal property boundaries